



BANQUET & CONFERENCE CHAIRS



1500 Taylor Avenue, Springfield, IL 62703

312.666.3366 • 800.621.4716

WWW.MIDWESTFOLDING.COM

EXPLORE THE POSSIBILITIES...



...buy with complete confidence



TABLE OF CONTENTS

Aluminum Series

Square Dome Aluminum.....	4
Oval Dome Aluminum.....	5
Round Aluminum.....	5
Square Dome Flex Aluminum.....	6
Oval Dome Flex Aluminum.....	6
Square Dome Flex with Edge Aluminum.....	7
Circle Flex Edge Aluminum.....	8
Rectangle Aluminum.....	9

Metal Series

Square Dome Metal.....	10
Circle Metal.....	11
Oval Dome Metal.....	12
Circle Metal.....	12
Round Dome Metal.....	13
Square Back Metal.....	14
Rectangle Back Metal.....	15
Stack.....	16
Chair Dolly.....	17

Fabric and Finish Options

Premier and Contract Quality Vinyl.....	18-19
Powder Coating Finishes.....	20
Tubular Aluminum Options.....	21
Fabrics.....	22-26

ALUMINUM SERIES



Square Dome Aluminum

Seat Height	Width	Depth	Height
18"	18"	23"	36"

**Refer to page 21 for tubular aluminum options*

Contact Us:

1500 Taylor Avenue, Springfield, IL 62703
Phone: 312.666.3366 • 800.621.4716
Fax: 312.666.2606

Email Orders to: Orders@midwestfolding.com
Email Questions/Inquiries to: info@midwestfolding.com
www.midwestfolding.com

ALUMINUM SERIES



Oval Dome Aluminum

Round Aluminum

Seat Height	Width	Depth	Height
18"	18"	24"	36"

Seat Height	Width	Depth	Height
19"	18"	19"	37"

**Refer to page 21 for tubular aluminum options*

Contact Us:

1500 Taylor Avenue, Springfield, IL 62703
Phone: 312.666.3366 • 800.621.4716
Fax: 312.666.2606

Email Orders to: Orders@midwestfolding.com
Email Questions/Inquiries to: info@midwestfolding.com
www.midwestfolding.com

ALUMINUM SERIES



**Square Dome
Flex Aluminum**



**Oval Dome
Flex Aluminum**

Seat Height	Width	Depth	Height
19"	17"	25"	35.5"

Seat Height	Width	Depth	Height
19"	16.75"	25"	35.5"

**Refer to page 21 for tubular aluminum options*

Contact Us:

1500 Taylor Avenue, Springfield, IL 62703
Phone: 312.666.3366 • 800.621.4716
Fax: 312.666.2606

Email Orders to: Orders@midwestfolding.com
Email Questions/Inquiries to: info@midwestfolding.com
www.midwestfolding.com

ALUMINUM SERIES



Square Dome Flex with Edge Aluminum

Seat Height	Width	Depth	Height
18.75"	17.25"	23.5"	37.75"

**Refer to page 21 for tubular aluminum options*

Contact Us:

1500 Taylor Avenue, Springfield, IL 62703
Phone: 312.666.3366 • 800.621.4716
Fax: 312.666.2606

Email Orders to: Orders@midwestfolding.com
Email Questions/Inquiries to: info@midwestfolding.com
www.midwestfolding.com

ALUMINUM SERIES



Circle Flex Edge Aluminum

Seat Height	Width	Depth	Height
18.75"	17"	23"	37"

**Refer to page 21 for tubular aluminum options*

Contact Us:

1500 Taylor Avenue, Springfield, IL 62703
Phone: 312.666.3366 • 800.621.4716
Fax: 312.666.2606

Email Orders to: Orders@midwestfolding.com
Email Questions/Inquiries to: info@midwestfolding.com
www.midwestfolding.com

ALUMINUM SERIES



Rectangle Aluminum

Seat Height	Width	Depth	Height
18.75"	19.25"	22.5"	36.5"

**Refer to page 21 for tubular aluminum options*

Contact Us:

1500 Taylor Avenue, Springfield, IL 62703
Phone: 312.666.3366 • 800.621.4716
Fax: 312.666.2606

Email Orders to: Orders@midwestfolding.com
Email Questions/Inquiries to: info@midwestfolding.com
www.midwestfolding.com

METAL SERIES



Square Dome Metal

Seat Height	Width	Depth	Height
19"	17.5"	21.25"	37"

Contact Us:

1500 Taylor Avenue, Springfield, IL 62703
 Phone: 312.666.3366 • 800.621.4716
 Fax: 312.666.2606

Email Orders to: Orders@midwestfolding.com
 Email Questions/Inquiries to: info@midwestfolding.com
www.midwestfolding.com

METAL SERIES



Circle Metal

Seat Height	Width	Depth	Height
18.75"	17.75"	20.5"	37"

Contact Us:

1500 Taylor Avenue, Springfield, IL 62703
 Phone: 312.666.3366 • 800.621.4716
 Fax: 312.666.2606

Email Orders to: Orders@midwestfolding.com
 Email Questions/Inquiries to: info@midwestfolding.com
www.midwestfolding.com

METAL SERIES



Oval Dome Metal

Circle Metal

Seat Height	Width	Depth	Height
18.75"	17.75"	20.5"	37"

Seat Height	Width	Depth	Height
18.75"	18"	24"	35.5"

Contact Us:

1500 Taylor Avenue, Springfield, IL 62703
 Phone: 312.666.3366 • 800.621.4716
 Fax: 312.666.2606

Email Orders to: Orders@midwestfolding.com
 Email Questions/Inquiries to: info@midwestfolding.com
www.midwestfolding.com

METAL SERIES



Round Dome Metal

Seat Height	Width	Depth	Height
18.75"	17.75"	21"	35.5"

Contact Us:

1500 Taylor Avenue, Springfield, IL 62703
Phone: 312.666.3366 • 800.621.4716
Fax: 312.666.2606

Email Orders to: Orders@midwestfolding.com
Email Questions/Inquiries to: info@midwestfolding.com
www.midwestfolding.com

METAL SERIES



Square Back Metal

Seat Height	Width	Depth	Height
18.75"	17.5"	21"	33.5"

Contact Us:

1500 Taylor Avenue, Springfield, IL 62703
Phone: 312.666.3366 • 800.621.4716
Fax: 312.666.2606

Email Orders to: Orders@midwestfolding.com
Email Questions/Inquiries to: info@midwestfolding.com
www.midwestfolding.com

METAL SERIES



Rectangle Back Metal

Seat Height	Width	Depth	Height
18"	16"	16"	36"

Contact Us:

1500 Taylor Avenue, Springfield, IL 62703
 Phone: 312.666.3366 • 800.621.4716
 Fax: 312.666.2606

Email Orders to: Orders@midwestfolding.com
 Email Questions/Inquiries to: info@midwestfolding.com
www.midwestfolding.com

METAL SERIES



Square



Circle



Oval Dome



Rectangle



Round



Square Dome

Stack

Frame Finish Options:	
Anodized Nickel	●
Bronze	●
Pewter	●
Sandtux Black	●
Other	●

Seating Options:	
UPHOLSTERY	
Panda	●
Premier	●
Other	●

Seat Height	Width	Depth	Height
18"	17"	17"	32"

Contact Us:

1500 Taylor Avenue, Springfield, IL 62703
Phone: 312.666.3366 • 800.621.4716
Fax: 312.666.2606

Email Orders to: Orders@midwestfolding.com
Email Questions/Inquiries to: info@midwestfolding.com
www.midwestfolding.com

CHAIR DOLLY SELECTION



Chair Dolly

Contact Us:

1500 Taylor Avenue, Springfield, IL 62703
Phone: 312.666.3366 • 800.621.4716
Fax: 312.666.2606

Email Orders to: Orders@midwestfolding.com
Email Questions/Inquiries to: info@midwestfolding.com
www.midwestfolding.com

PREMIER AND CONTRACT QUALITY VINYL





PREMIER AND CONTRACT QUALITY VINYL

TEXHYDE

Leather Look with Textile Softness

PREMIER

PREMIER has been developed to meet the rigorous demands of hospital, contract, and institutional use.

PREMIER is designed for all covering requirements and exceeds the accepted industry standards for upholstery products.

PREMIER is ideally suited for commercial and contract upholstery applications, as well as residential:

- office
- lounge
- hospitals
- nursing homes
- family rooms
- restaurants
- hotel/motel
- hair salons
- living room
- casual dining

PREMIER is formulated to meet the flammability* requirements contained in the following specifications:

- Federal Specification AA-2950A (Supersede CCCA680a)
- NFPA 701, Small Scale Test
- NFPA 260 A, Class 1
- Boston Fire Code (BFD IX-1)
- Designed to pass FAA 25.853
- Port Authority of NY & NJ
- California Fire Regulation (Bulletin 117-Section E)
- Motor Vehicle Safety Standard No. 302
- UFAC Class 1
- BIFMA

* *NOTE:* Terms and corresponding data refer to performance in the specific test indicated and should not be construed to imply the behavior of this or any other material under actual fire conditions.

TECHNICAL DATA

- Width: 54 inches
- Weight: 40 ounces per linear yard
- Roll Length: 30 yards
- Sulfide stain resistant
- Oil resistant
- -20 degree F. cold crack
- Abrasion Resistance - 100,000 double rubs, Wyzenbeek ASTM 04157
- Anti-static slip finish
- Ultraviolet resistant
- Mildew and bacteria resistant (ASTM G21-70 & G22-76)
- Heat sealable
- Excellent cleanability
- Excellent steam strength

ADDITIONAL INFORMATION AND CLEANING INSTRUCTIONS

PREMIER is specially formulated to resist the following bacteria, and many others, when tested using the AATC method 147-1986: *Aspergillus Niger*; *Penicillium Pinophilum*; *Chaetomium Globosum*; *Aureobasidium Pullulans*; *Trichoderma sp.*; *Pseudomonas Aeruginosa*; *Staphylococcus Aureus*; and *Klebsiella Pneumoniae*.

Cleaning Instructions: Ordinary dirt and stains can be removed with mild soap and water. Rinse the cleaned area with clear water and dry with a soft, lint free cloth. As with all stains, prompt cleaning is recommended. PREMIER will resist, without serious discoloration, the repeated action of normal dilutions of chlorine bleaches or ammonia based cleaners used for sterilization and cleaning in medical environments.

ORDERS

When placing orders please indicate:

1. Grade - Premium Grade Expanded
2. Pattern Name - Premier
3. Pattern Number - BA 636
4. Color Name and Number

POWDER COATING FINISHES



Sandtex Black - 1



Oil Black - 2



Lace White - 2



Uni-Cream - 2



Martin Brown - 2



Matte Black - 2



Silvervein - 2



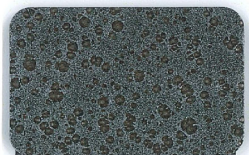
Dark Sienna - 2



Sparkle Silver - 3



Silver Bullet - 3



Bronze Silverado - 3



Anodized Nickel - 3



Pewter - 3



New Age Rust - 3



Clear Coat - 3



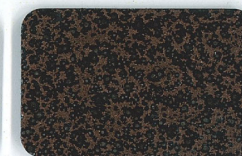
Maroon RAL3004 - 3



Speckled Bronze - 3



Bronze - 4



Coppervein - 4



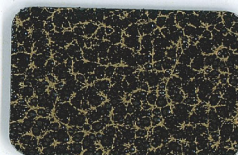
Burst Rust - 4



Bronze Metallic - 4



Gold Metallic - 4



Goldvein - 4



Ornamental Bronze-4



Rustic Copper - 4



Stainless Steel - 4



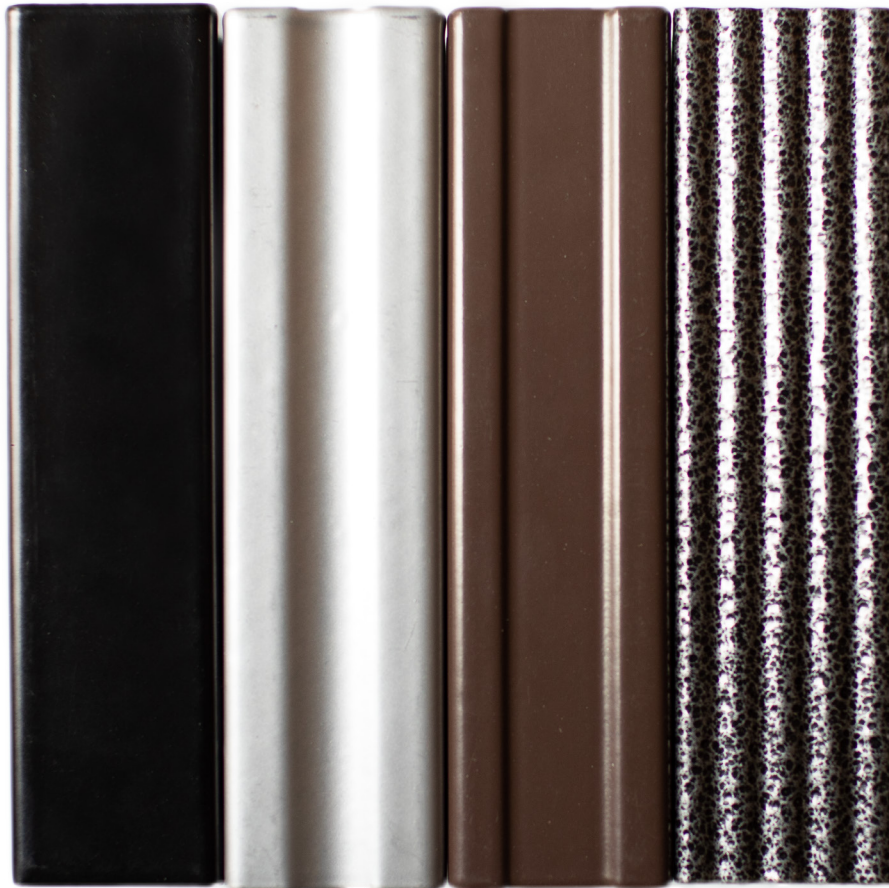
Nearly Chrome



Brass

**** If you don't see a color, just ask. We do RAL colors, too. ****

TUBULAR ALUMINUM OPTIONS



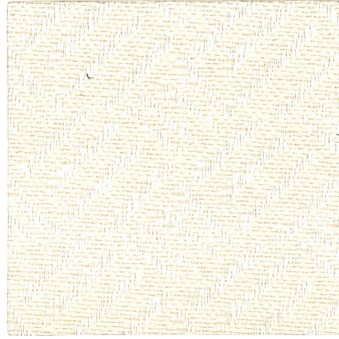
Flat Tube

Butterfly Tube

Fluted Tube

Ripple Tube

FABRICS



291



292



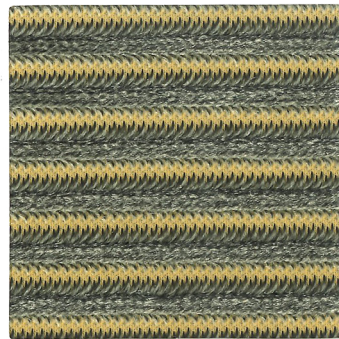
063



090



127



148

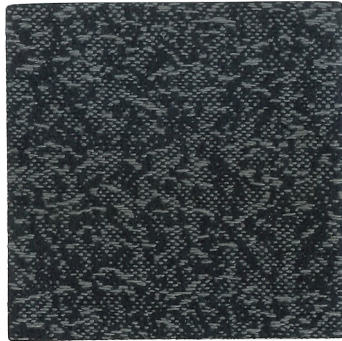
FABRICS



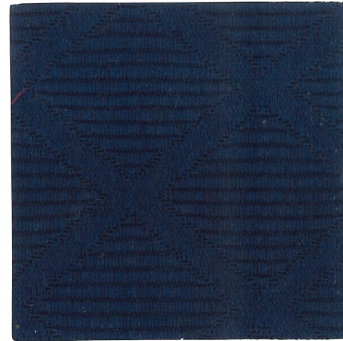
104



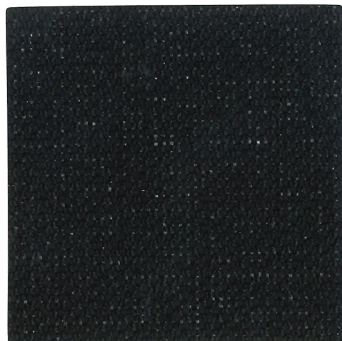
122



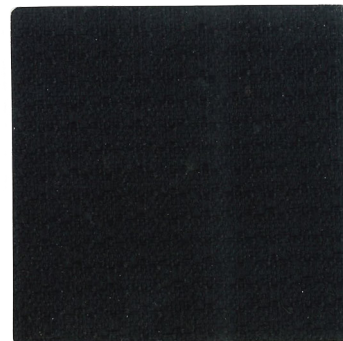
212



106



290

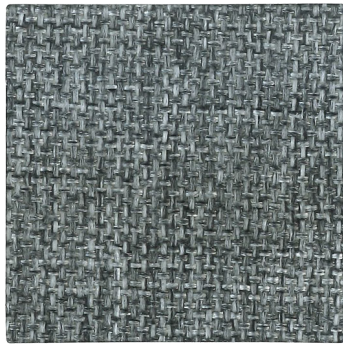


093

FABRICS



060



053



092



061

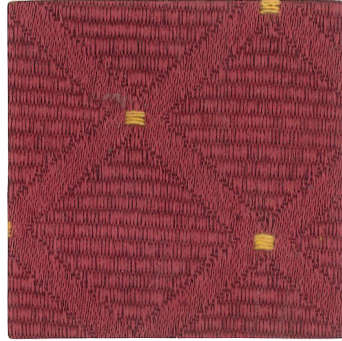


091

FABRICS



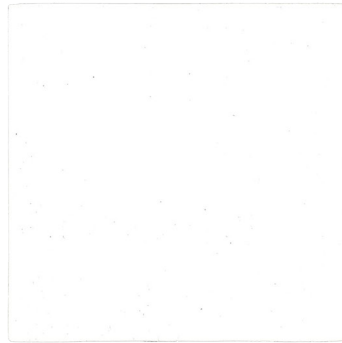
019



016



018



050

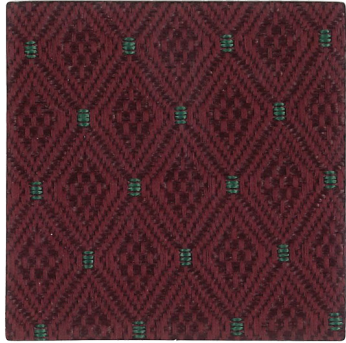


051

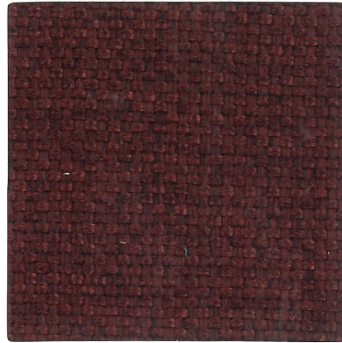


057

FABRICS



056



147



122



143



012



068