

TRANSFOLD™ PORTABLE STAGES

Ready to Go, Wherever Your Crew Performs



TransFold™ Portable Stages

TransFold portable stages give you the freedom to configure the stage to create any performance environment you can imagine. Our various sizes give you the flexibility to build the exact size and shape stage that you need to accommodate your event. With TransFold, you are the director.

Features and Benefits

- Up to 5 different heights
- Units fold to store
- When folded, units fold to 2" in height when stacked
- Constructed of heavy gauge steel and laminated plywood core decking for unsurpassed safety
- Guard rails are furnished for uppermost level of the riser set
- Expansion sections available
- Weight capacity of 200 lbs/ft², evenly distributed



TA4816C-CB 4'x8'x16"
Carpet Charcoal-Deck/B



TF4824C-CB 4'x8'x24"
Carpet Charcoal-Deck/B



Built in Coupling Lock System

Stage units are equipped with integral couplings that may be selectively engaged as needed to join platforms of the same height or platforms that are 8" different in height. Coupling devices are permanently attached.



Height Adjustments

The legs on dual height stage units are easy to adjust. Telescoping leg inserts are secured to the leg's receiver tubes with clevis pins having spring loaded detentes for added security. Clevis pins are attached to the legs with lanyards for added convenience. Tightening the knob assures a wobble free connection.



Accessories for TransFold™ Portable Stages

Guardrails



TGRU48-B
48"x30" Black Guard Rail

Clamp-on design with chair stop



Model No.	Size L x W	WT LBS
TGRU36	36" x 30"	24
TGRU48	48" x 30"	36

Portable Steps

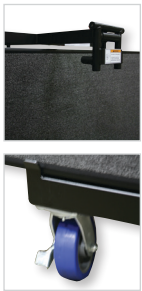


TST3
36"x40"x24"

- Steps are 12" deep and 34" wide
- Slip resistant, grey polypropylene surfaces
- Units include two handrails
- Steps clamp securely to the stage perimeter
- Two, three and four step models include wheels

Model No.	Size L x W x H	Steps	WT LBS
TST1	36" x 14" x 8"	1 Step	44
TST2	36" x 27" x 16"	2 Step	74
TST3	36" x 40" x 24"	3 Step	113
TST4	36" x 52" x 32"	4 Step	142

MSC-B Table Caddy



Model No.	Capacity	Size W x L x H	WT LBS
MSC	4-8	35 1/4" x 44" x 64"	105.0

Note: Assembly Required

Carpet Colors



Charcoal Grey

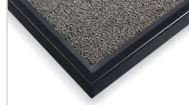


Ebony Black

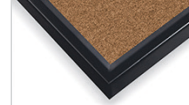


Pewter Grey

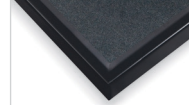
Deck Finishes



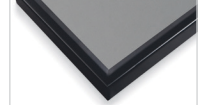
Carpet



Hardboard



Black
Polypropylene



Grey
Polypropylene

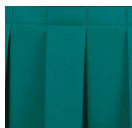
Skirting Colors



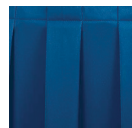
Black



Burgundy



Jade



Navy



Shirred Skirting

Skirt Clip



Model No.	Order Information
TSKC	1 clip recommended per linear foot of skirting